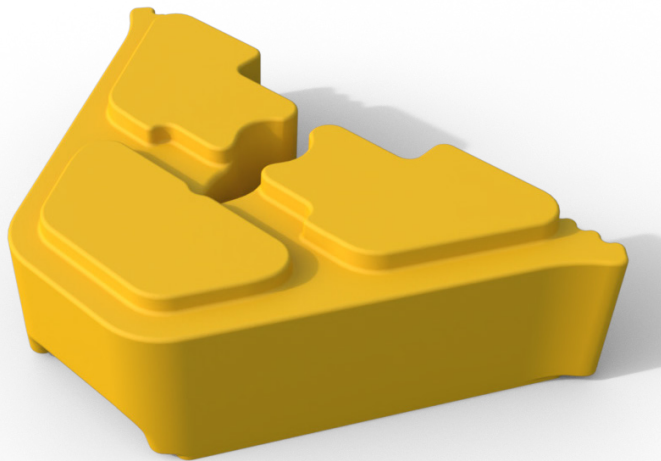


Q-Weight

Code: QSBW-M

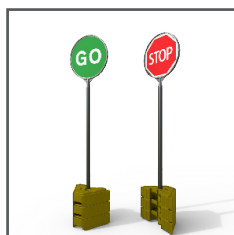
Cusack

A single piece weight manufactured from 100% recycled material that is 100% recyclable.
The Q-Weight provides a sound and stable loading for the entire Melba Swintex Q-Sign range that prevents movement in windy conditions.

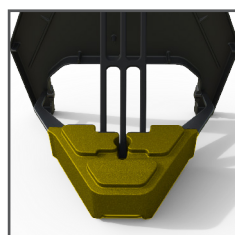


FEATURES

- Manufactured from recycled PVC.
- Ergonomic handle ensures easy lift & carry.
- One man lift at 8 kg.
- Bases stack with each other.
- Hole location to hold a Stop/Go Lollipop sign.
- Fits entire Q-Sign range.
- 120 per pallet.



Stop/Go Boards



Q-Sign Fitting



Fits A-Frames

SPECIFICATIONS

Width: 270 mm
Height: 135 mm
Length: 462 mm
Weight: 8 kg



Cusack Locations

Scotland

Unit 602
Clyde Gateway East
London Road
Glasgow
G32 8RH
Tel: 0141 778 6500

Bolton

38 Great Bank Road
Wingates Industrial Estate
Westhoughton
Bolton
BL5 3XU
Tel: 01942 810888

Wolverhampton

Anchor Lane
Bilston
West Midlands
WV14 9NE
Tel: 01902 371715

London

1 Dundee Way
Brimsdown
Enfield
EN3 7SX
Tel: 020 8344 4100

Somerset

Unit 4
Siger Drive
Isleport Business Park
Highbridge
Somerset
TA9 4BA
Tel: 01278 448 980

www.cusack.co.uk
sales@cusack.co.uk