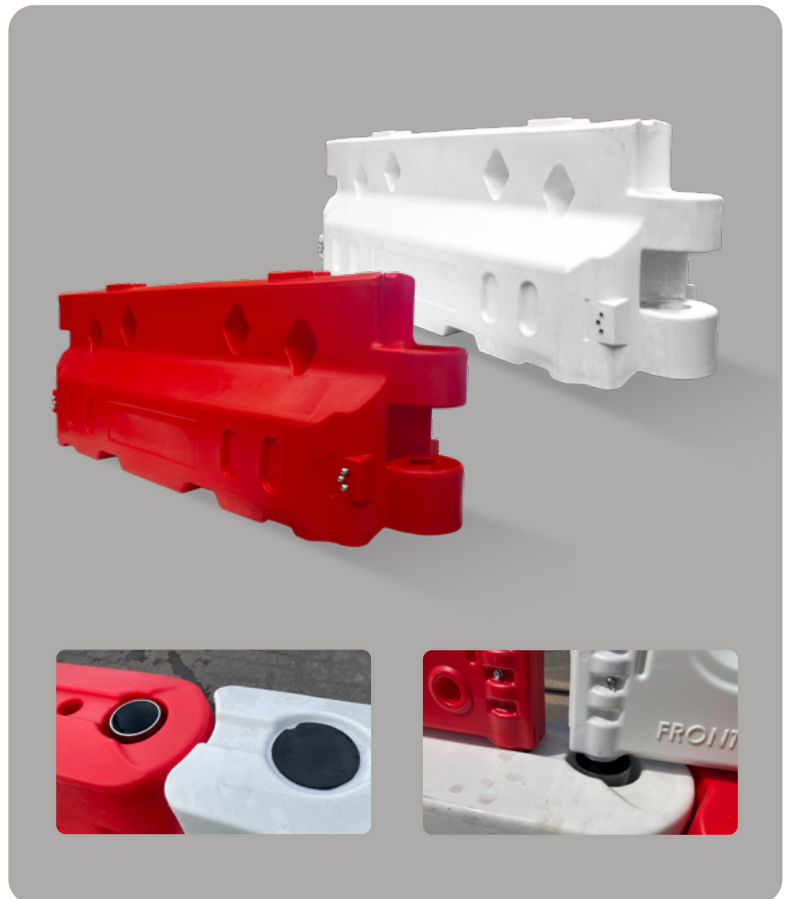


Defender50 Water-Fillable Barrier System

Features

- Made from UV-stable polymer for durability in outdoor environments.
- Securely connects using two metal plates and a steel post.
- Features a sump plug for quick and hassle-free drainage.
- Allows for 138° of flexible angular movement for adaptable layouts.
- Forklift entry points at the base ensure easy transport and positioning.
- Gates can be installed without dismantling the entire system.
- Compatible with the DoubleTop and metal fencing top range for seamless integration.
- Easy top-fill access with a secure cap for efficient setup.
- Crash tested and proven effective at speeds up to 50 mph.
- Crash testing: impact severity level rating A.
- Embossing available for a professional finish.
- Corporate colour matching also available.



Crash-tested at 50mph | Impact level rating A



Securely connects using metal plates, bolts, and steel posts



Defender50 Water-Fillable Barrier System

Additional Information

- Height: 800mm
- Width: 2295mm
- Depth: 350mm
- Weight: 40kg
- Capacity: 400 litres
- Embossing: 1 side, MOQ 120.
- Corporate colour match: blue MOQ 150, other colours MOQ 200

Defender50 Part Codes

QWDF50BR - Red Defender 50 barrier c/w 2x Connecting Plates, 12x connecting plate screws, and 1x connecting post

QWDF50BW - White Defender 50 barrier c/w 2x Connecting Plates, 12x connecting plate screws, and 1x connecting post

QWDF50A1 - Connecting post

QWDF50A2 - Connecting plate

QWDF50A3 - Connecting plate screws (6pcs per pack)

QWDF50A4 - Spin welding screw

Fencing Top Part Codes

QWDF50TW - Powder-coated white mesh metal fence. Dimensions: (L)2m x (H)1.2m

WWADTR - DoubleTop red plastic fence. Dimensions: (L)1000mm x (H)1150mm x (D)60mm

WWADTW - DoubleTop white plastic fence. Dimensions: (L)1000mm x (H)1150mm x (D)60mm

Compatible with DoubleTop Fencing and metal top fencing

