

# Q-Fence and MultiFit Base

**CU-FC14 - Orange Non-Reflective Q-Fence**

**CU-FB01 - MultiFit Base - Black**

# Cusack

The Q-Fence provides an alternative solution to traditional metal fencing. At 2m in height, the long-lasting, non-conductive panel can be easily installed by one person and is safe to handle with no sharp edges. No mesh that could separate reduces potential injuries to the workforce or general public. Pre-manufactured fixing holes to attach permit/courtesy signs when required.



## Cusack Locations

### Scotland

Unit 602  
Clyde Gateway East  
London Road  
Glasgow  
G32 8RH  
Tel: 0141 778 6500

### Bolton

38 Great Bank Road  
Wingates Industrial Estate  
Westhoughton  
Bolton  
BL5 3XU  
Tel: 01942 810888

### Wolverhampton

Anchor Lane  
Bilston  
West Midlands  
WV14 9NE  
Tel: 01902 371715

### London

1 Dundee Way  
Brimsdown  
Enfield  
EN3 7SX  
Tel: 020 8344 4100

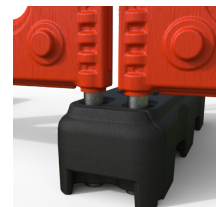
### Somerset

Unit 4  
Siger Drive  
Isleport Business Park  
Highbridge  
Somerset  
TA9 4BA  
Tel: 01278 448 980

[www.cusack.co.uk](http://www.cusack.co.uk)  
[sales@cusack.co.uk](mailto:sales@cusack.co.uk)



Linear Run



Anti-Trip Front Facing



Centre Holes Back



Palletised

## Features:

- Completely non-conductive – no risk of shock
- Compared to metal temporary fencing, the one-piece unbreakable Q-Fence ensures no broken welds
- Single person lift and installation
- No metal mesh reducing potential injuries and workforce and public
- Safe stacking – Q-Fence: 40 per pallet  
MultiFit base: 40 per pallet.
- Complete angular movement to navigate bends and corners
- 100% recyclable

## Standards:

- Chapter 8 - The Traffic Signs Manual
- Traffic Signs Regulations & General Directions

### Q-Fence

<b>Height:</b>	2005 mm
<b>Overall Width:</b>	1100 mm
<b>Fence Width:</b>	1000 mm
<b>Depth:</b>	75 mm
<b>Stacking Depth:</b>	50 mm
<b>Weight:</b>	8.20 kg

### MultiFit Base

<b>Height:</b>	170 mm
<b>Width:</b>	740 mm
<b>Depth:</b>	210 mm
<b>Weight:</b>	18 kg